

Anritsu VNA Calibration

이훈 차장

Hun.Lee@anritsu.com

문태수 대리

Taesoo.Moon@anritsu.com

Anritsu
envision : ensure

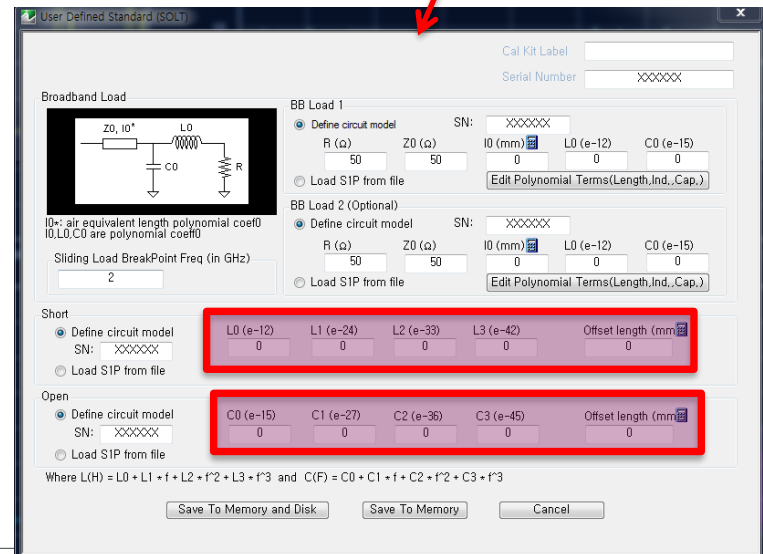
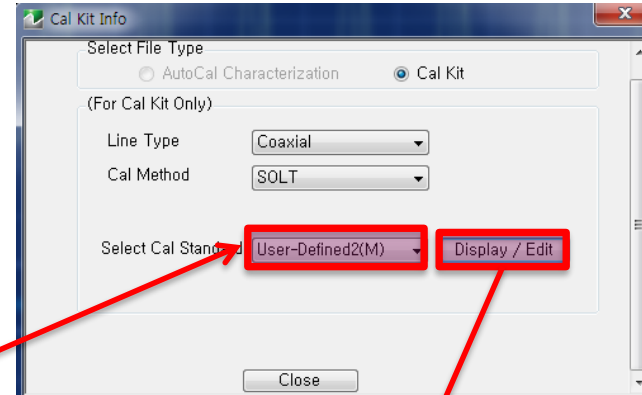
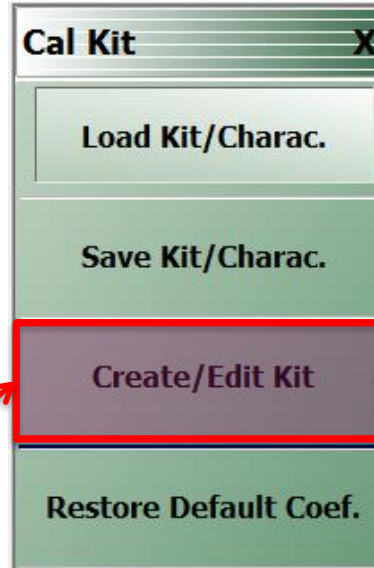
목차

1. Cal data 입력방법
2. Cal file Load
3. Cal kit 선택메뉴

Anritsu VNA Cal data 입력 방법

- 대개 Calibration Kit 제조사에서 Cal data 제공 시, Open(C0~C3 및 Offset Length), Short(L0~L3 및 Offset Length)값만 제공
- Load 및 Thru 값의 경우 제공하지 않음

Anritsu VNA Cal data 입력 방법



Open 및 Short 에 대한 Parameter(L, C, Offset Length 값) 입력

Anritsu VNA Cal data 입력 방법

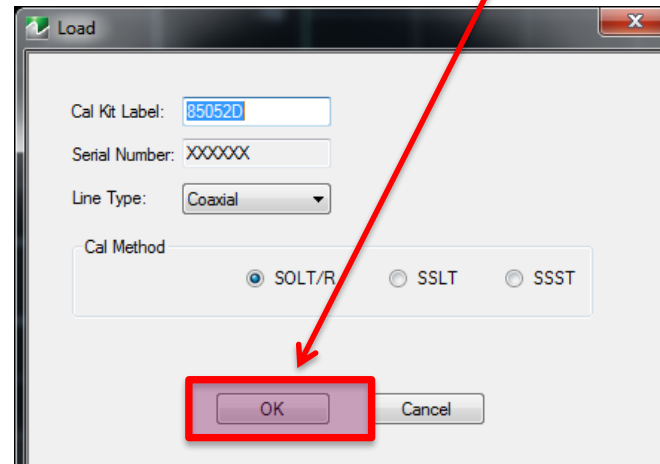
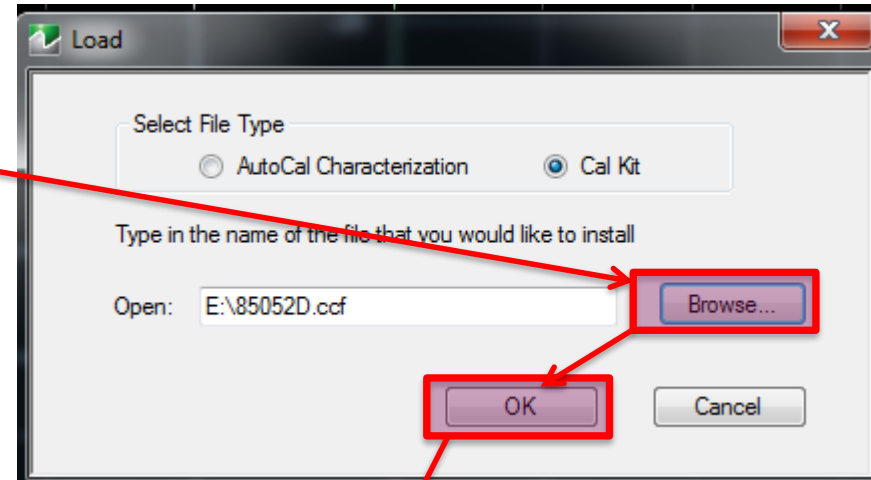
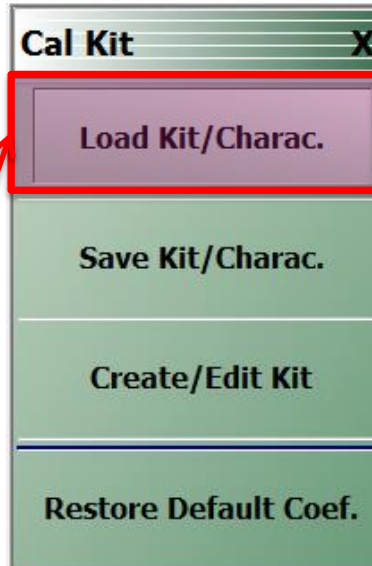
Cal kit Label name 입력

Save To Memory and Disk

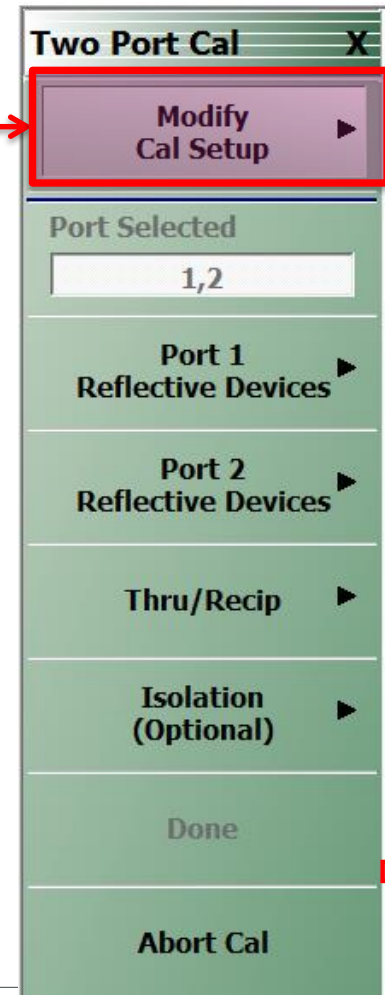
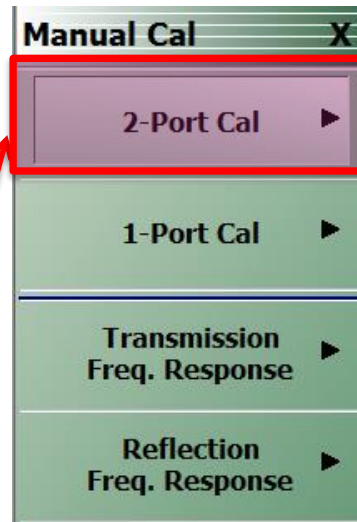
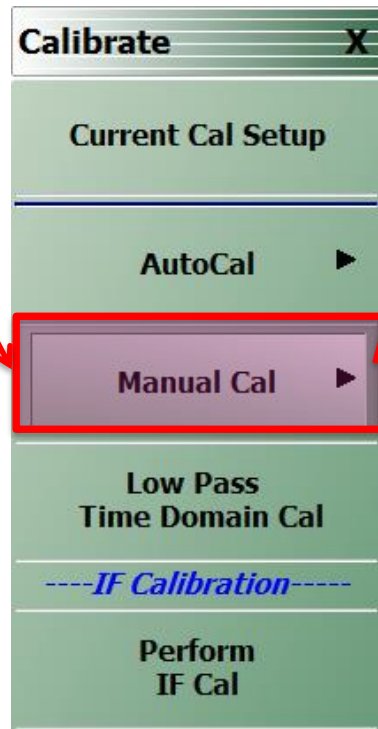
저장(S)

Cal kit file name 입력 후 저장(.ccf file 확장자)

Anritsu VNA Cal file load 방법



Calibration 할 때 선택 메뉴



다음장 계속

Calibration 할 때 선택 메뉴

각 포트에 Load된 Cal kit model 선택

